

# FOR LEASE



**5305 W. VILLAGE PARKWAY, SUITE 1 | VILLAGE ON THE CREEKS, ROGERS, AR**

Village on the Creeks is the largest garden office park in Northwest Arkansas, offering premier office, retail, and restaurant spaces in a beautiful lake setting adjacent to the Razorback Greenway Trail System. Suite 1 consists of three offices, reception area, breakroom, and extra space that could be used as a conference room.



**Suite 1:  
1,218 SF**



**3 Offices  
Reception Area  
Break Room  
Bathroom**

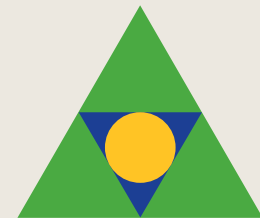


**Direct access to  
Razorback Greenway  
and walking trails in a  
beautiful setting**



**Quick and easy  
access to  
Interstate 49**

**\$23.50 PSF  
+ Gas and Electric**



**Devereux**  
Real Estate Investments

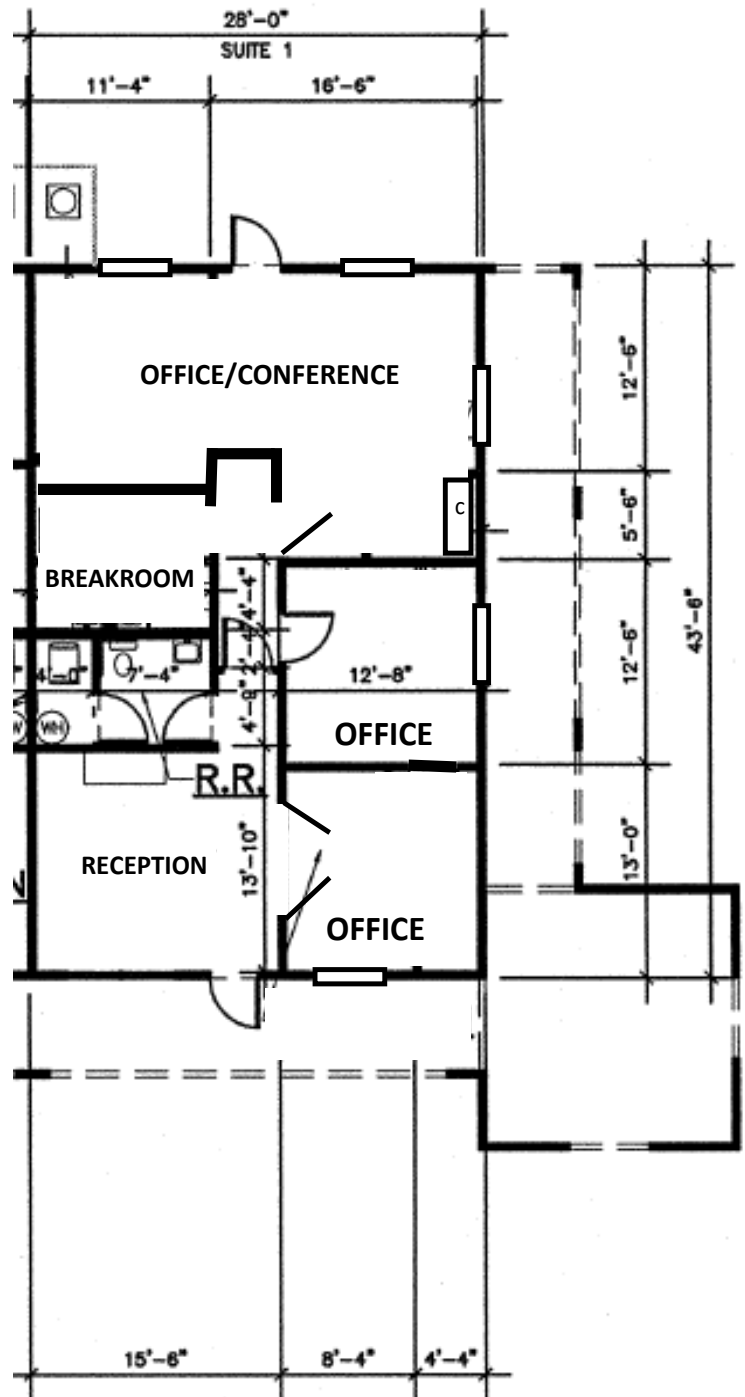
**PAT MORRISON  
EXECUTIVE BROKER**

**5309 W. VILLAGE PKWY | SUITE 2  
ROGERS, AR 72758  
P. 479-464-4292  
C. 479-936-4200  
PatMorrison@DevereuxREI.com**

# FLOOR PLAN

## 5305 W. Village Parkway Suite 1

- 1,218 SF
- One Office/Conference Room
- Two Offices
- Reception Area
- Break Room
- Bathroom



**Devereux**

Real Estate Investments

**PAT MORRISON**  
EXECUTIVE BROKER

5309 W. VILLAGE PKWY | SUITE 2  
ROGERS, AR 72758  
P. 479-464-4292  
C. 479-936-4200  
PatMorrison@DevereuxREI.com





**PAT MORRISON**  
EXECUTIVE BROKER

5309 W. VILLAGE PKWY | SUITE 2  
ROGERS, AR 72758  
P. 479-464-4292  
C. 479-936-4200  
PatMorrison@DevereuxREI.com

