

FOR LEASE



5204 W Village Parkway, Suites 1-4, Rogers, AR

Village on the Creeks is the largest garden office park in Northwest Arkansas, housing office, retail restaurant, and medical tenants. It enhances quality of life by offering a walking trail on Razorback Greenway and a lake with beautiful views. This prime restaurant space faces 52nd Street, a major throughfare parallel to I-49 and offers great visibility with plenty of parking plus an optional 1200 SF outdoor covered patio seating area available to lease. It features upscale interior design for a high-end restaurant setting.



Suites 1-4
6269 SF



3 private dining areas
Large commercial
kitchen; 2 walk-in
cooler/freezers

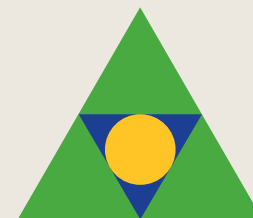


Direct access to
Razorback Greenway
and walking trails in a
beautiful setting



Quick and easy
access to
Interstate 49

\$20 PSF
+ CAM, \$5.15 PSF estimated

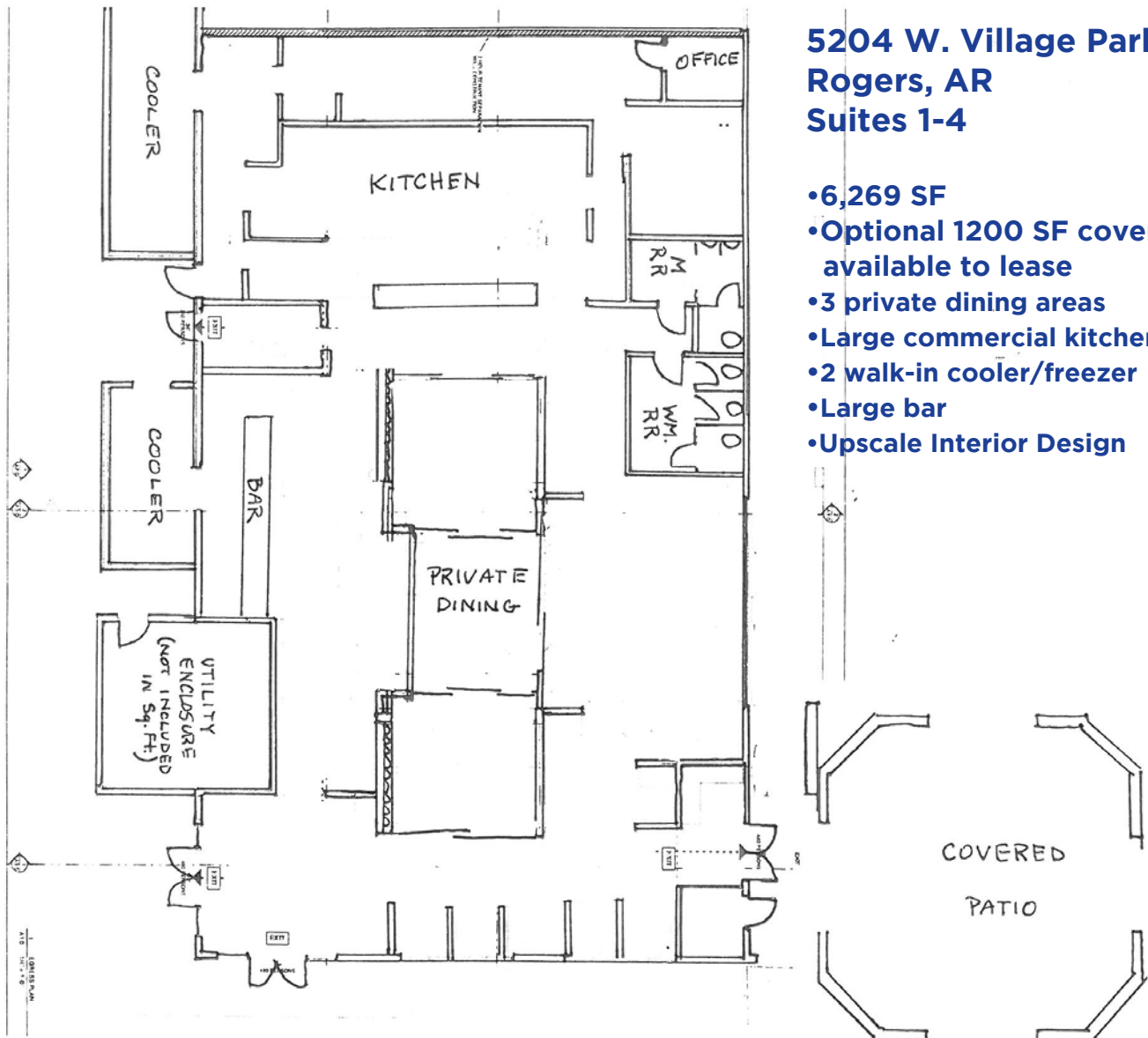


Devereux
Real Estate Investments

PAT MORRISON
EXECUTIVE BROKER

5309 W. VILLAGE PKWY | SUITE 2
ROGERS, AR 72758
P. 479-464-4292
C. 479-936-4200
PatMorrison@DevereuxREI.com

FLOOR PLAN



**5204 W. Village Parkway
Rogers, AR
Suites 1-4**

- 6,269 SF
- Optional 1200 SF covered patio available to lease
- 3 private dining areas
- Large commercial kitchen
- 2 walk-in cooler/freezer
- Large bar
- Upscale Interior Design



Devereux

Real Estate Investments

**PAT MORRISON
EXECUTIVE BROKER**

**5309 W. VILLAGE PKWY | SUITE 2
ROGERS, AR 72758**

P. 479-464-4292

C. 479-936-4200

PatMorrison@DevereuxREI.com



PAT MORRISON
EXECUTIVE BROKER

5309 W. VILLAGE PKWY | SUITE 2
ROGERS, AR 72758
P. 479-464-4292
C. 479-936-4200
PatMorrison@DevereuxREI.com

