

FOR LEASE



2108 S. 54th Street, SUITE 3 | VILLAGE ON THE CREEKS, ROGERS, AR

Village on the Creeks is the largest garden office park in Northwest Arkansas. It houses office, retail, restaurant, and medical tenants and enhances quality of life by offering a walking trail on Razorback Greenway and a lake with beautiful views. Suite 3 offers three offices, a conference room, breakroom, and reception area.



**Suite 3
1,162 SF**



**3 Offices
Conference Room
Reception Area
Break Room**



**Direct access to
Razorback Greenway
and walking trails in a
beautiful setting**



**Quick and easy
access to
Interstate 49**

**\$22.00 PSF
+ Gas and Electric**



Devereux
Real Estate Investments

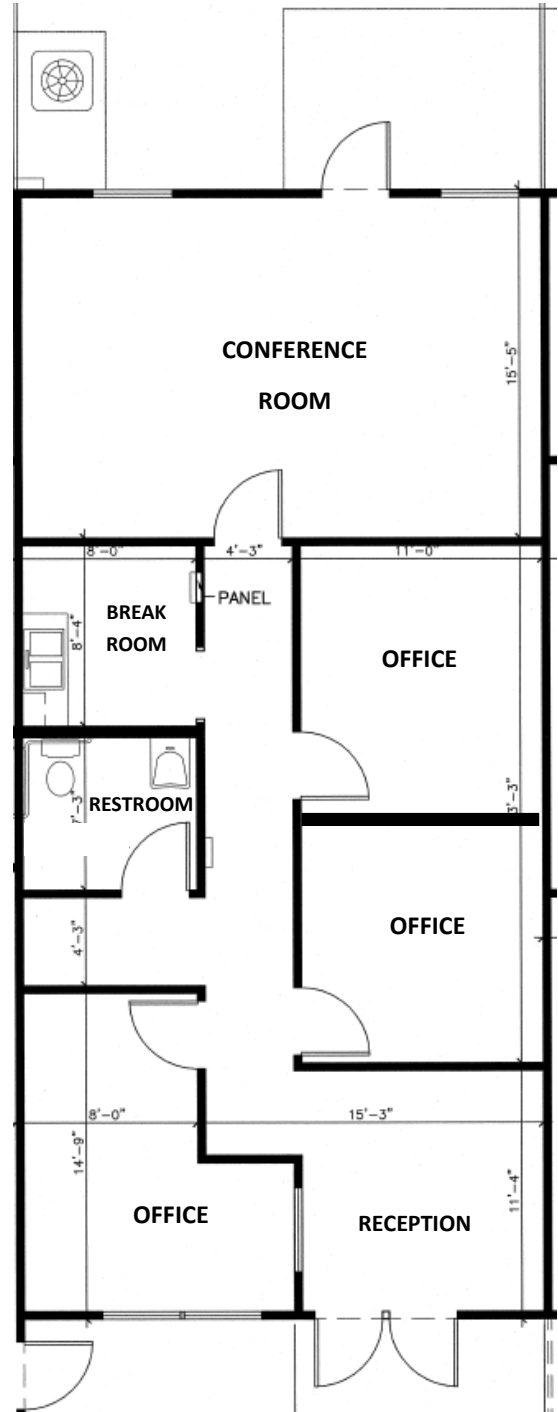
**PAT MORRISON
EXECUTIVE BROKER**

**5309 W. VILLAGE PKWY | SUITE 2
ROGERS, AR 72758
P. 479-464-4292
C. 479-936-4200
PatMorrison@DevereuxREI.com**

FLOOR PLAN

**2108 S. 54th St.
Suite 3**

- 1,162 SF
- 3 Offices
- Conference Room
- Break Room
- Restrooms



Devereux

Real Estate Investments

**PAT MORRISON
EXECUTIVE BROKER**

5309 W. VILLAGE PKWY | SUITE 2
ROGERS, AR 72758
P. 479-464-4292
C. 479-936-4200
PatMorrison@DevereuxREI.com



PAT MORRISON
EXECUTIVE BROKER

5309 W. VILLAGE PKWY | SUITE 2
ROGERS, AR 72758
P. 479-464-4292
C. 479-936-4200
PatMorrison@DevereuxREI.com

