

FOR LEASE



2102 S. 54th Street, Suite 2 | VILLAGE ON THE CREEKS, ROGERS, AR

Village on the Creeks is the largest garden office park in Northwest Arkansas. It houses office, retail, restaurant, and medical tenants and enhances quality of life by offering a walking trail on Razorback Greenway and a lake with beautiful views. Suite 2 includes three offices, conference room, kitchen, break room, and restroom.



**Suite 2
1,196 SF**



**4 Offices
Reception Area
Kitchen/Break Room**

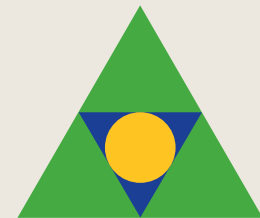


**Direct access to
Razorback Greenway
and walking trails in a
beautiful setting**



**Quick and easy
access to
Interstate 49**

**\$22.75 PSF
+ Gas and Electric**



Devereux
Real Estate Investments

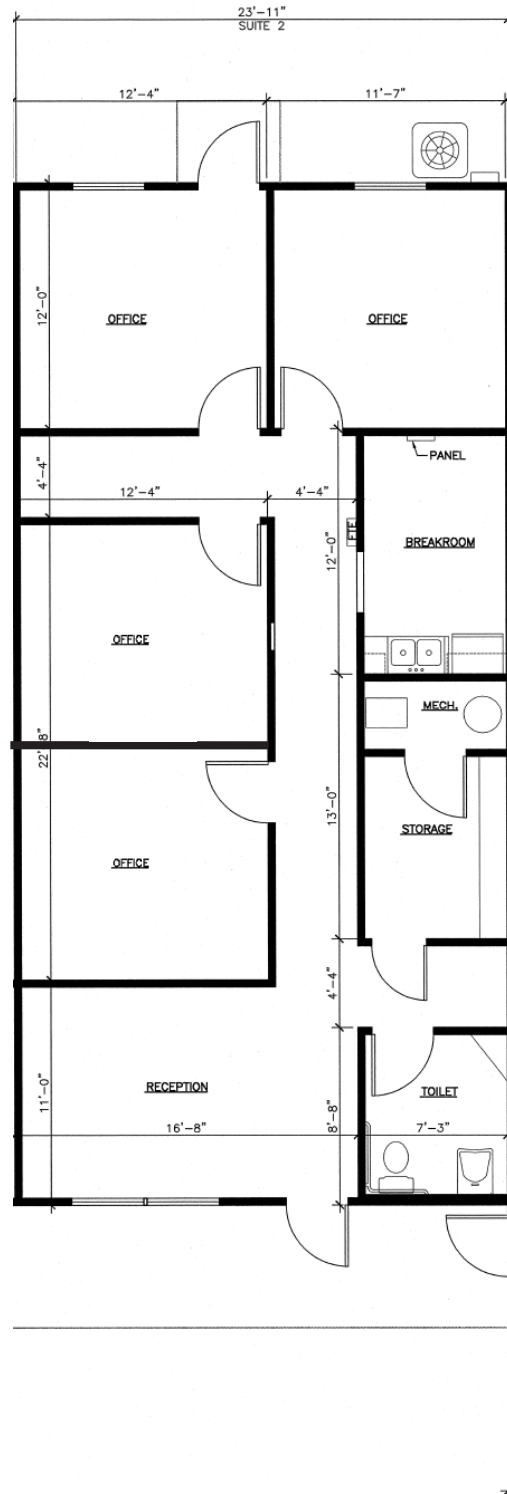
**PAT MORRISON
EXECUTIVE BROKER**

**5309 W. VILLAGE PKWY | SUITE 2
ROGERS, AR 72758
P. 479-464-4292
C. 479-936-4200
PatMorrison@DevereuxREI.com**

FLOOR PLAN

**2102 S. 54th St.
Suite 2**

- 1,196 SF
- 4 Offices
- Reception
- Kitchen/Break Room
- Storage Room
- Restroom



Devereux
Real Estate Investments

PAT MORRISON
EXECUTIVE BROKER

5309 W. VILLAGE PKWY | SUITE 2
ROGERS, AR 72758
P. 479-464-4292
C. 479-936-4200
PatMorrison@DevereuxREI.com



PAT MORRISON
EXECUTIVE BROKER

5309 W. VILLAGE PKWY | SUITE 2
ROGERS, AR 72758
P. 479-464-4292
C. 479-936-4200
PatMorrison@DevereuxREI.com

