

# FOR LEASE



**5230 WILLOW CREEK DR. SUITE 102, SPRINGDALE, AR**

Conveniently located between Fayetteville and Springdale, Arkansas, just off I-49 at Exit 69 in the Willow Creek Medical development. This well established development area includes: Willow Creek Women's Hospital, Creekside Center for Women, Northwest Arkansas Retina Clinic, Urology Clinic and Collier Drug and Compounding.



**2,038 SF**



**Lobby/Reception  
Large Open Area  
4 Offices  
Breakroom**



**Quick and easy  
access to  
Interstate 49  
Exit 69**

**\$21.00 PSF NNN**



**Devereux**

Real Estate Investments

**PAT MORRISON  
EXECUTIVE BROKER  
CELL: 479-936-4200**

[PatMorrison@DevereuxREI.com](mailto:PatMorrison@DevereuxREI.com)

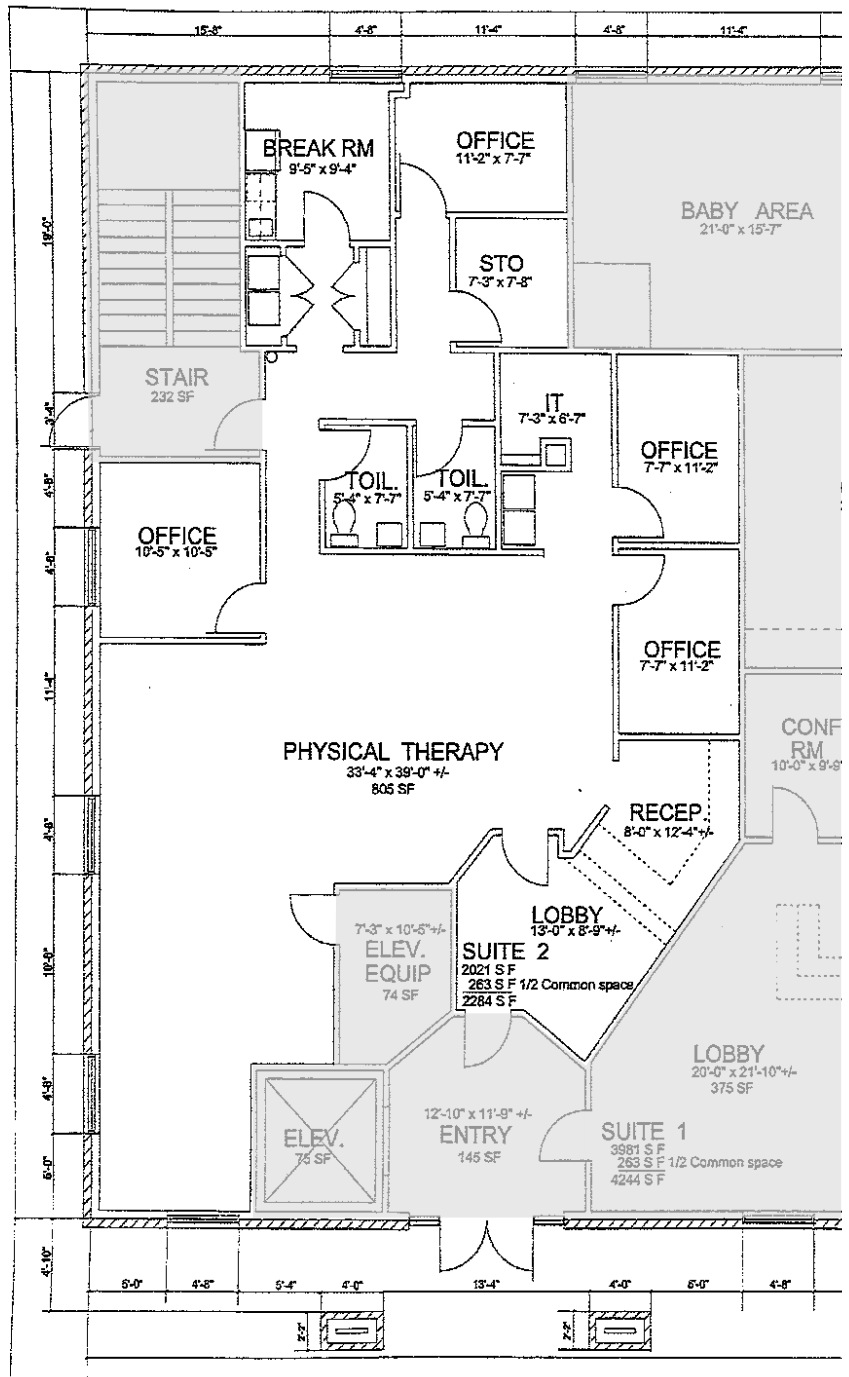
**CHUCK DICUS  
ASSOCIATE  
CELL: 501-920-7511  
[cwdicus1948@gmail.com](mailto:cwdicus1948@gmail.com)**

**5309 W. VILLAGE PKWY | SUITE 2  
ROGERS, AR 72758  
OFFICE: 479-464-4292**

# FLOOR PLAN

5230 Willow Creek Dr.  
Suite 102  
Springdale, AR

- 2,038 SF NNN
- Lobby/Reception area
- Large Open Space designed for medical but may be used for offices
- 4 Separate Offices
- Breakroom
- Large Storage Area
- 2 Restrooms



**Devereux**  
Real Estate Investments

**PAT MORRISON**  
EXECUTIVE BROKER

OFFICE: 479-464-4292  
CELL: 479-936-4200  
PatMorrison@DevereuxREI.com

**CHUCK DICUS**  
ASSOCIATE

OFFICE: 479-464-4292  
CELL: 501-920-7511  
cwdicus1948@gmail.com





## 5230 WILLOW CREEK DR. SUITE 102, SPRINGDALE, AR

**PAT MORRISON**  
EXECUTIVE BROKER

OFFICE: 479-464-4292  
CELL: 479-936-4200  
PatMorrison@DevereuxREI.com

**CHUCK DICUS**  
ASSOCIATE

OFFICE: 479-464-4292  
CELL: 501-920-7511  
cwdicus1948@gmail.com

