

# FOR LEASE



**5306 W. VILLAGE PARKWAY, SUITE 1 | VILLAGE ON THE CREEKS, ROGERS, AR**

Village on the Creeks is the largest garden office park in Northwest Arkansas, offering premier office, retail, and restaurant spaces in a beautiful lake setting adjacent to the Razorback Greenway Trail System. Suite 1 consists of 11 offices (back offices with lake view), conference room, breakroom, and large office that could be used as a layout room or second conference room. Includes two baths, one with shower.



**Suite 1:  
3,379 SF**



**11 Offices  
Large Conference Rm  
Break Room  
2 Restrooms (1 w/shwr)**

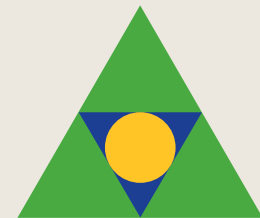


**Direct access to  
Razorback Greenway  
and walking trails in a  
beautiful setting**



**Quick and easy  
access to  
Interstate 49**

**\$23.00 PSF  
+ Gas and Electric**



**Devereux**  
Real Estate Investments

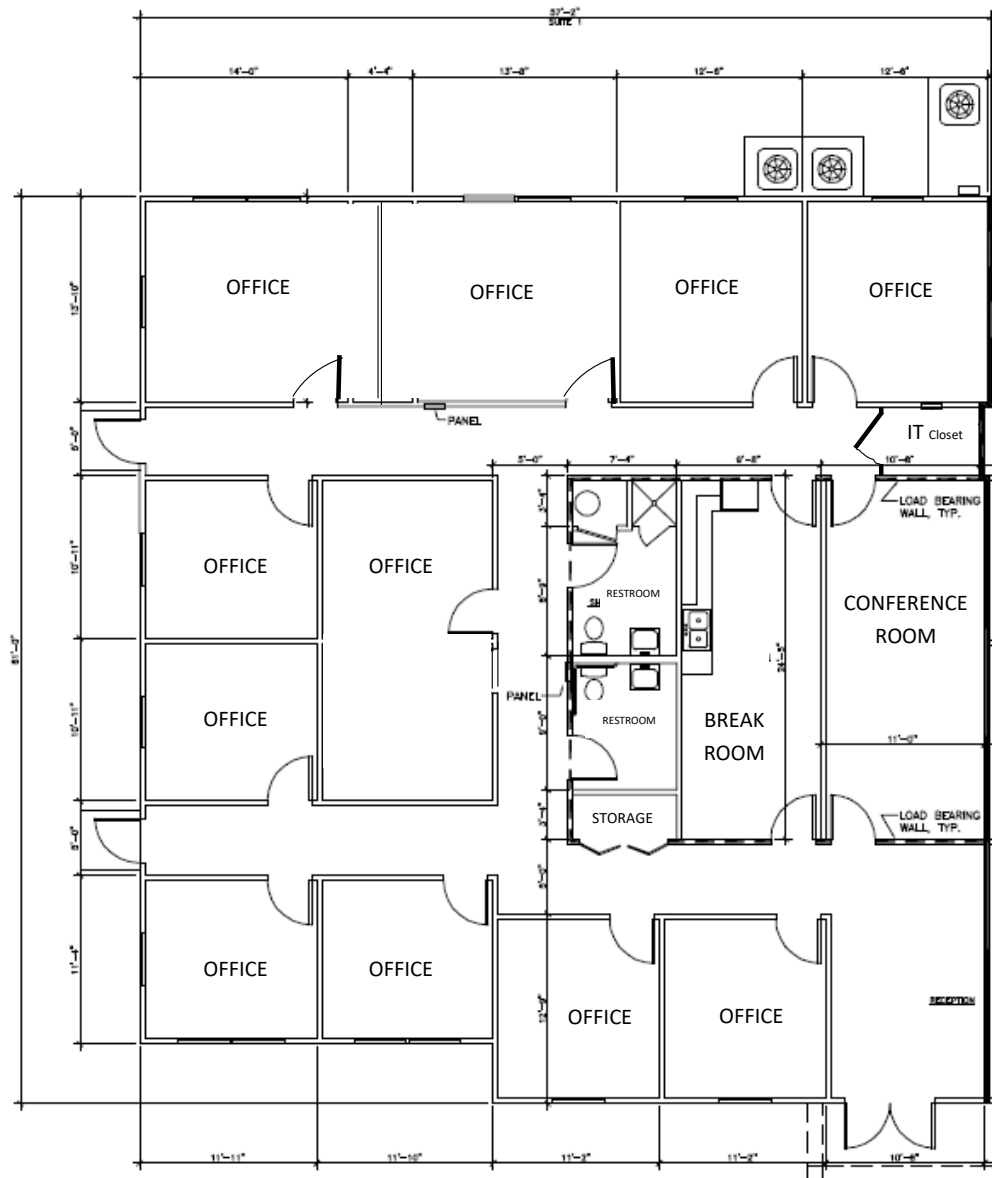
**PAT MORRISON  
EXECUTIVE BROKER**

**5309 W. VILLAGE PKWY | SUITE 2  
ROGERS, AR 72758  
P. 479-464-4292  
C. 479-936-4200  
PatMorrison@DevereuxREI.com**

# FLOOR PLAN

5306 W. Village Parkway  
Suite 1

- 3,379 SF
- Conference Room
- 11 Offices; back offices have lake view
- Large office could be a layout room or second conference room
- Break Room
- 2 Restrooms, one with shower



**Devereux**  
Real Estate Investments

**PAT MORRISON**  
EXECUTIVE BROKER

5309 W. VILLAGE PKWY | SUITE 2  
ROGERS, AR 72758  
P. 479-464-4292  
C. 479-936-4200  
PatMorrison@DevereuxREI.com



**PAT MORRISON**  
EXECUTIVE BROKER

5309 W. VILLAGE PKWY | SUITE 2  
ROGERS, AR 72758  
P. 479-464-4292  
C. 479-936-4200  
PatMorrison@DevereuxREI.com

