

# FOR LEASE



**5204 W. VILLAGE PARKWAY, SUITE 12B | VILLAGE ON THE CREEKS, ROGERS, AR**

Village on the Creeks is the largest garden office park in Northwest Arkansas, offering premier office, retail, and restaurant spaces in a beautiful lake setting adjacent to the Razorback Greenway Trail System. Suite 12B is an upstairs loft with 864 square feet and an exterior stairway.



**Suite 1  
864 SF**



**Two Offices  
Exterior Stairway  
Restroom with Shower**

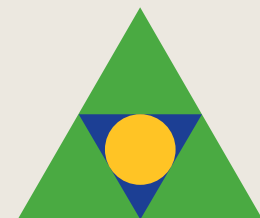


**Direct access to  
Razorback Greenway  
and walking trails in a  
beautiful setting**



**Quick and easy  
access to  
Interstate 49**

**\$20.50 PSF  
+ Gas and Electric**



**Devereux**  
Real Estate Investments

**PAT MORRISON  
EXECUTIVE BROKER**

**5309 W. VILLAGE PKWY | SUITE 2  
ROGERS, AR 72758**

**P. 479-464-4292**

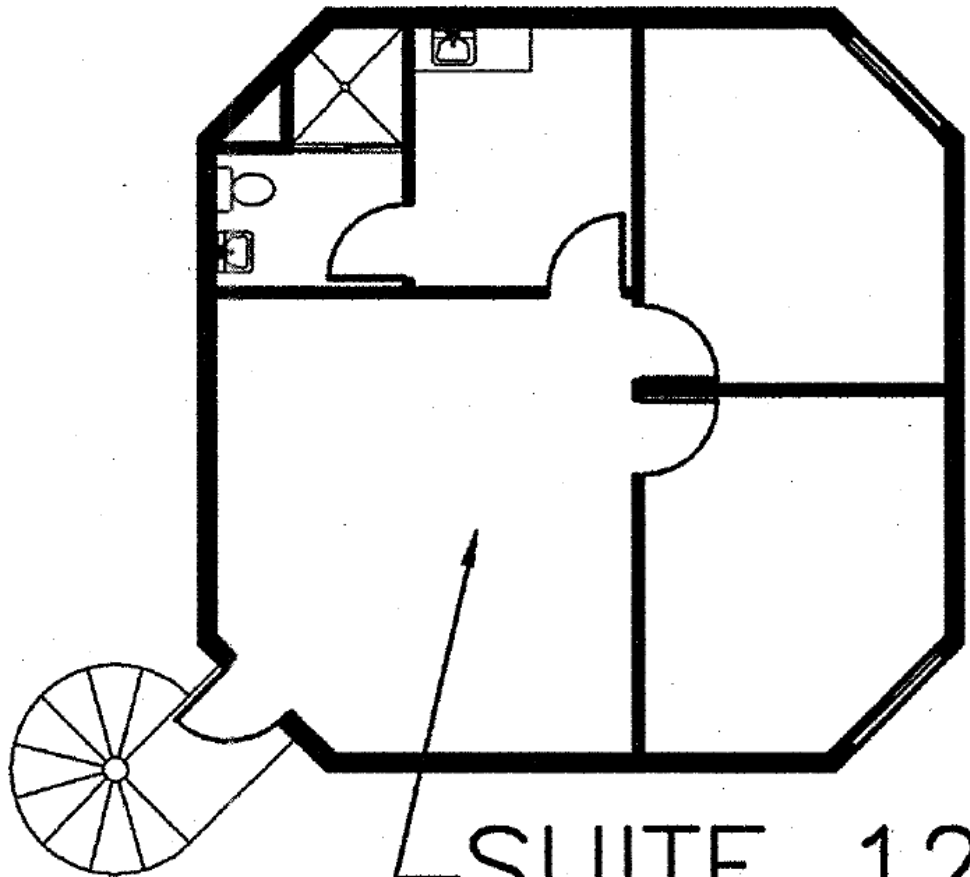
**C. 479-936-4200**

**PatMorrison@DevereuxREI.com**

# FLOOR PLAN

**5204 W. Village Parkway  
Suite 12B**

- 864 SF
- Restroom with shower
- Exterior Spiral Stairway Entrance
- Two offices
- Reception Area
- Kitchen



**SUITE 12B**

**864 S.F.**



**Devereux**  
Real Estate Investments

**PAT MORRISON**  
EXECUTIVE BROKER

5309 W. VILLAGE PKWY | SUITE 2  
ROGERS, AR 72758  
P. 479-464-4292  
C. 479-936-4200  
PatMorrison@DevereuxREI.com





**PAT MORRISON**  
EXECUTIVE BROKER

5309 W. VILLAGE PKWY | SUITE 2  
ROGERS, AR 72758  
P. 479-464-4292  
C. 479-936-4200  
PatMorrison@DevereuxREI.com

