

FOR LEASE



5212 W. VILLAGE PARKWAY, SUITE 5B | VILLAGE ON THE CREEKS, ROGERS, AR

Village on the Creeks is the largest garden office park in Northwest Arkansas, offering premier office, retail, and restaurant spaces in a beautiful lake setting adjacent to the Razorback Greenway Trail System. Suite 5 totals 2,996 square feet and features a large open space with loft that can accommodate cubicles or be built-out to individual offices. Includes a large conference area, a separate office, a breakroom, a large storage area, and two restrooms. Showcase lighting is perfect for displays or layout.



Suite 5A
2,996 SF



Conference Area
Showcase Lighting
Office
Breakroom

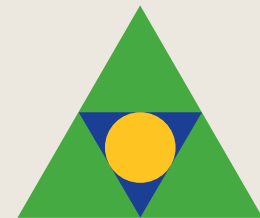


Direct access to
Razorback Greenway
and walking trails in a
beautiful setting



Quick and easy
access to
Interstate 49

\$22.75 PSF
+ Gas and Electric



Devereux
Real Estate Investments

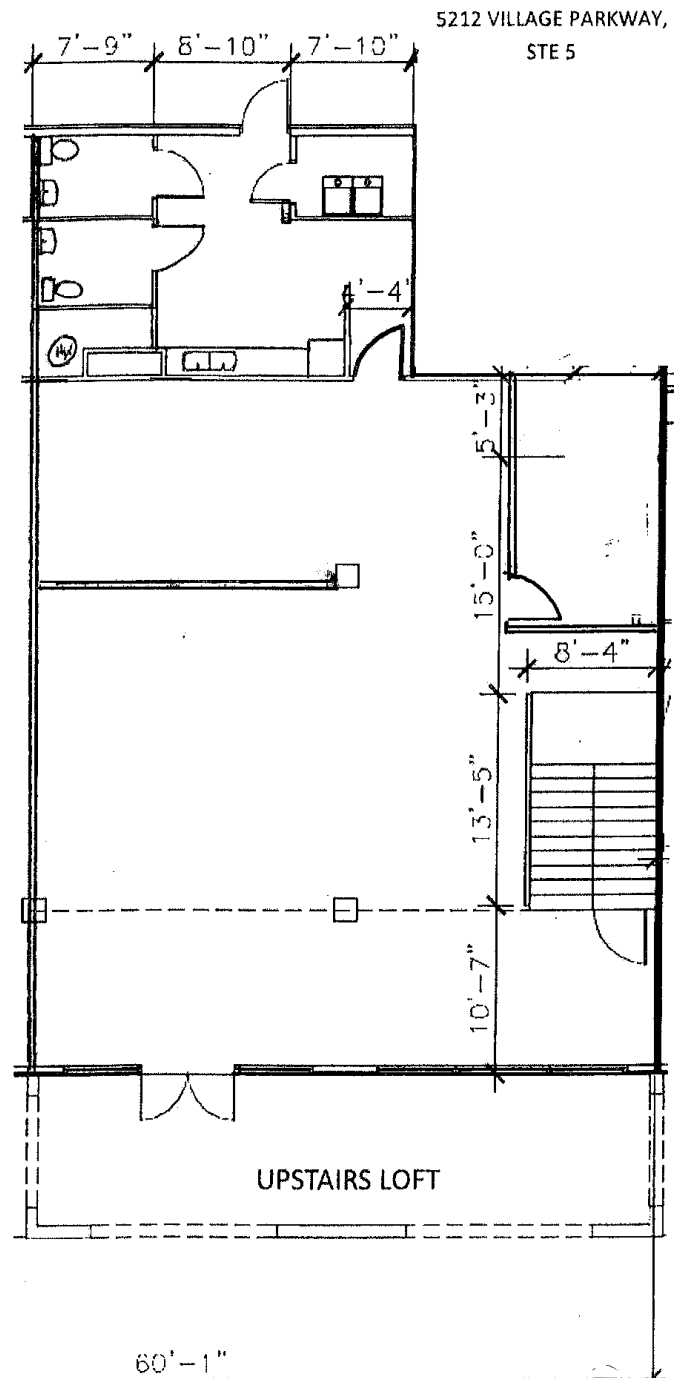
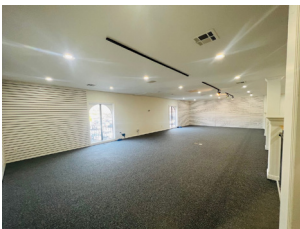
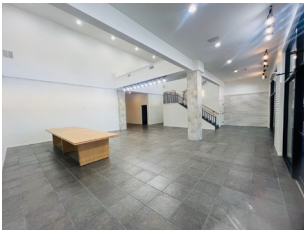
PAT MORRISON
EXECUTIVE BROKER

5309 W. VILLAGE PKWY | SUITE 2
ROGERS, AR 72758
P. 479-464-4292
C. 479-936-4200
PatMorrison@DevereuxREI.com

FLOOR PLAN

5212 W. Village Parkway Suites 5B

- 5B: 2,996 SF
- Front Door Parking
- Large Open Space with loft
/ may build-out or use for cubes
- 1 Separate Office
- Breakroom
- Large Storage Area
- 2 Restrooms
- Showcase Lighting: Display or Layout



Devereux
Real Estate Investments

PAT MORRISON
EXECUTIVE BROKER

5309 W. VILLAGE PKWY | SUITE 2
ROGERS, AR 72758
P. 479-464-4292
C. 479-936-4200
PatMorrison@DevereuxREI.com



**PAT MORRISON
EXECUTIVE BROKER**

5309 W. VILLAGE PKWY | SUITE 2
ROGERS, AR 72758
P. 479-464-4292
C. 479-936-4200
PatMorrison@DevereuxREI.com

