

FOR LEASE



5310 W. VILLAGE PARKWAY, SUITE 5 | VILLAGE ON THE CREEKS, ROGERS, AR

Village on the Creeks is the largest garden office park in Northwest Arkansas. It houses office, retail, restaurant, and medical tenants and enhances quality of life by offering a walking trail on Razorback Greenway and a lake with beautiful views. Suite 5 offers four offices, a reception area, conference room, breakroom, and restrooms.



**Suite 5
1629 SF**



**4 Offices
Reception Area
Conference Room
Breakroom & Restroom**

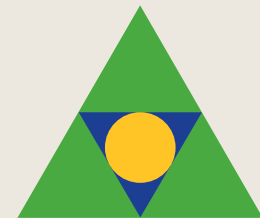


**Direct access to
Razorback Greenway
and walking trails in a
beautiful setting**



**Quick and easy
access to
Interstate 49**

**\$23.00 PSF
+ Gas and Electric**



Devereux
Real Estate Investments

**PAT MORRISON
EXECUTIVE BROKER**

**5309 W. VILLAGE PKWY | SUITE 2
ROGERS, AR 72758**

P. 479-464-4292

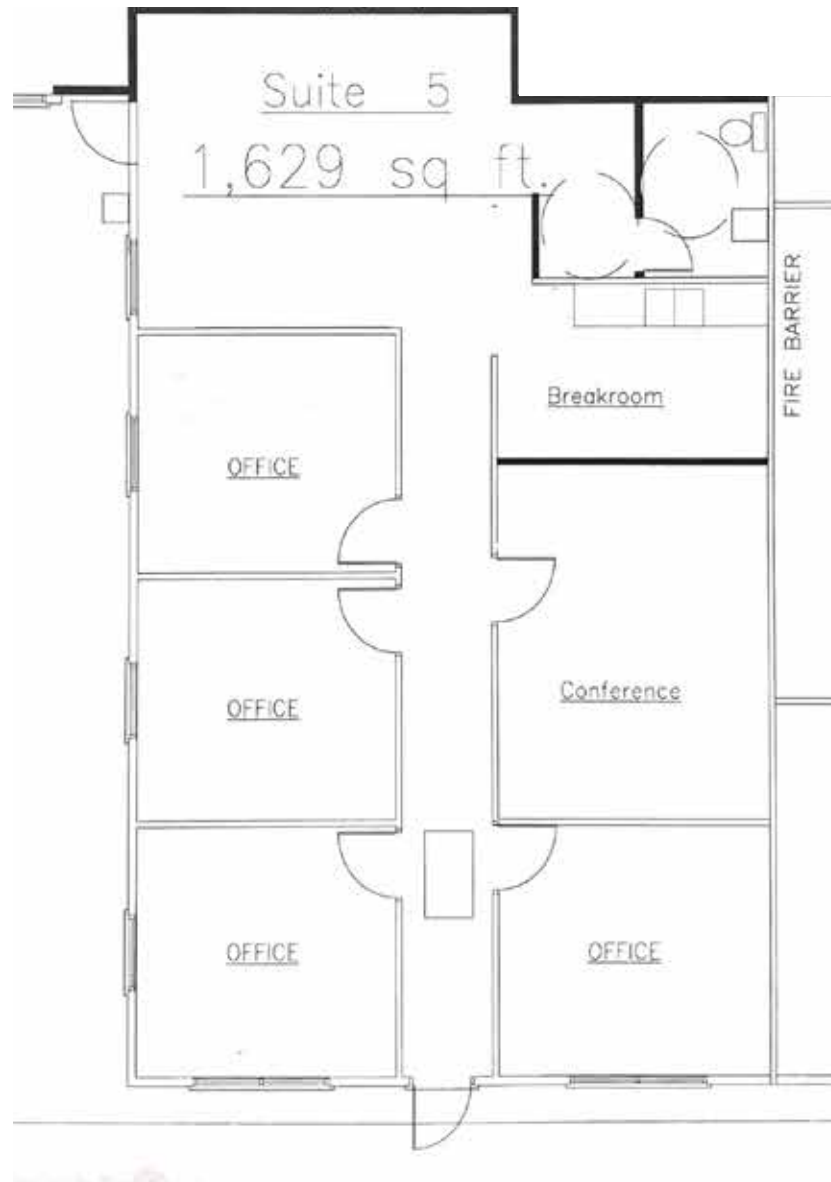
C. 479-936-4200

PatMorrison@DevereuxREI.com

FLOOR PLAN

5310 W. Village Parkway Suite 5

- 1629 SF
- 4 Offices
- Reception Area
- Conference Room
- Breakroom
- Restroom



Devereux

Real Estate Investments

PAT MORRISON
EXECUTIVE BROKER

5309 W. VILLAGE PKWY | SUITE 2
ROGERS, AR 72758

P. 479-464-4292

C. 479-936-4200

PatMorrison@DevereuxREI.com



PAT MORRISON
EXECUTIVE BROKER

5309 W. VILLAGE PKWY | SUITE 2
ROGERS, AR 72758
P. 479-464-4292
C. 479-936-4200
PatMorrison@DevereuxREI.com

