

FOR LEASE



5204 VILLAGE PARKWAY, SUITE #5 | VILLAGE ON THE CREEKS, ROGERS, AR

Village on the Creeks is the largest garden office park in Northwest Arkansas. It houses office, retail, restaurant, and medical tenants and enhances quality of life by offering a walking trail on Razorback Greenway and a lake with beautiful views. Suite 5 has one office, one restroom, storage, a large open area, a catering kitchen and bar area, and is suitable for retail space.



Suite 5
2,155 SF



1 Office
Large Open Area
Catering Kitchen/Bar Area
1 Restrooms

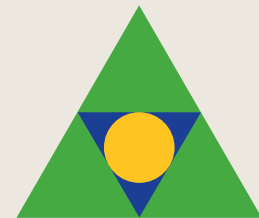


Direct access to
Razorback Greenway
and walking trails in a
beautiful setting



Quick and easy
access to
Interstate 49

\$20.50 PSF
NNN



Devereux
Real Estate Investments

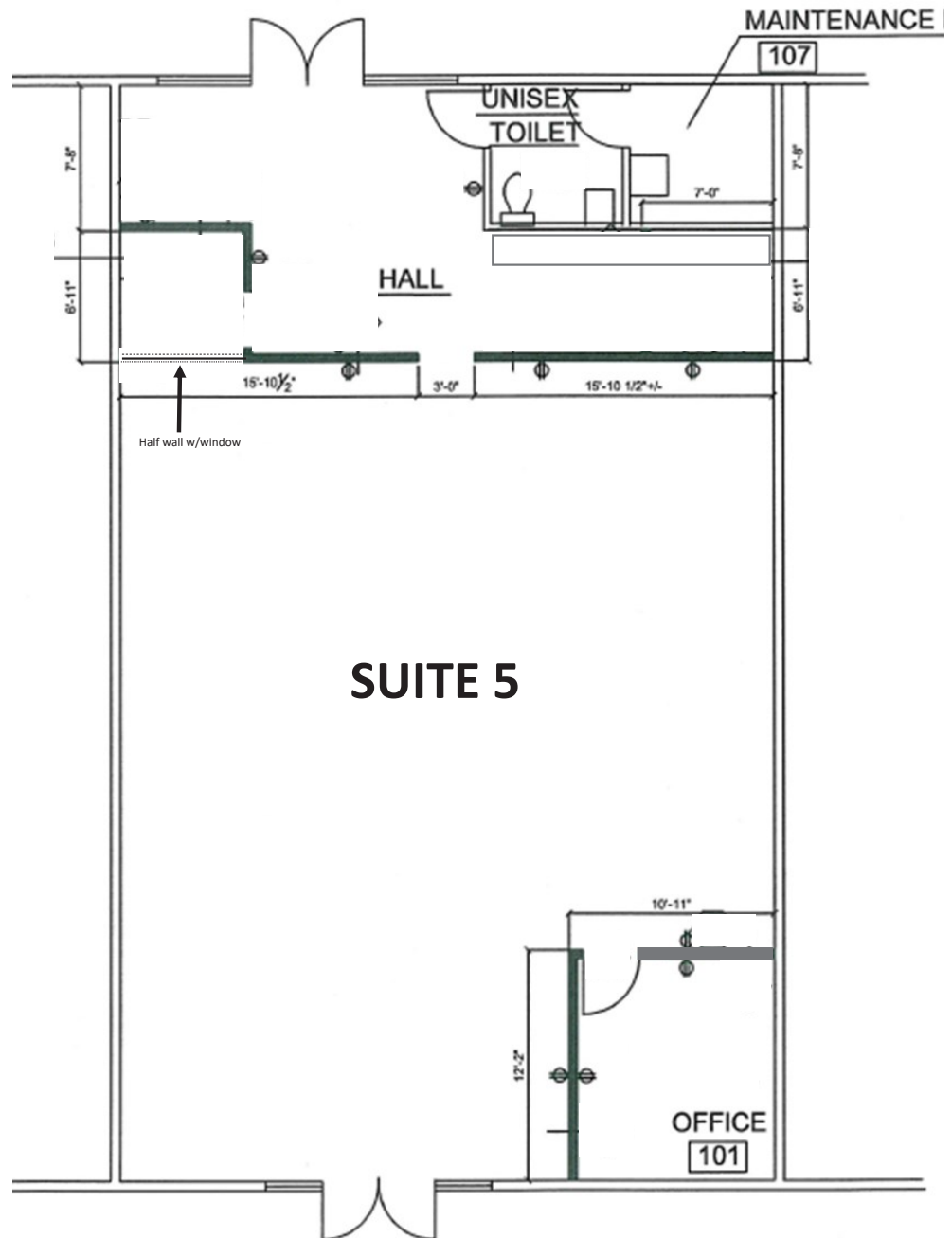
PAT MORRISON
EXECUTIVE BROKER

5309 W. VILLAGE PKWY | SUITE 2
ROGERS, AR 72758
P. 479-464-4292
C. 479-936-4200
PatMorrison@DevereuxREI.com

FLOOR PLAN

**5204 Village Parkway
Suite #5**

- 2,155 SF
- 1 Office
- Great for Event Center
- Suitable for Retail
- Catering Kitchen/Bar Area
- 1 Restroom
- Storage Closet



Devereux
Real Estate Investments

PAT MORRISON
EXECUTIVE BROKER

5309 W. VILLAGE PKWY | SUITE 2
ROGERS, AR 72758
P. 479-464-4292
C. 479-936-4200
PatMorrison@DevereuxREI.com



PAT MORRISON
EXECUTIVE BROKER

5309 W. VILLAGE PKWY | SUITE 2
ROGERS, AR 72758
P. 479-464-4292
C. 479-936-4200
PatMorrison@DevereuxREI.com

