

FOR LEASE



5209 W VILLAGE PARKWAY | VILLAGE ON THE CREEKS, ROGERS, AR

Village on the Creeks is the largest garden office park in Northwest Arkansas. It houses office, retail, restaurant, and medical tenants and enhances quality of life by offering a walking trail on Razorback Greenway and a lake with beautiful views. This property offers two full floors with 32 total offices, 2 file rooms, 2 conference rooms, and a breakroom. See full list on back.



**1st Floor: 6,922 SF
2nd Floor: 4,140 SF
11,062 SF Total**



**Two Full Floors
32 Total Offices
2 Conference Rooms
2 File Rooms, Breakroom**

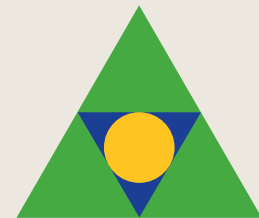


**Direct access to
Razorback Greenway
and walking trails in a
beautiful setting**



**Quick and easy
access to
Interstate 49**

**\$20.00 PSF
NNN**



Devereux
Real Estate Investments

**PAT MORRISON
EXECUTIVE BROKER**

**5309 W. VILLAGE PKWY | SUITE 2
ROGERS, AR 72758
P. 479-464-4292
C. 479-936-4200
PatMorrison@DevereuxREI.com**

FLOOR PLAN

5209 W Village Parkway

•11,062 TOTAL SF

First Floor, 6,922 SF

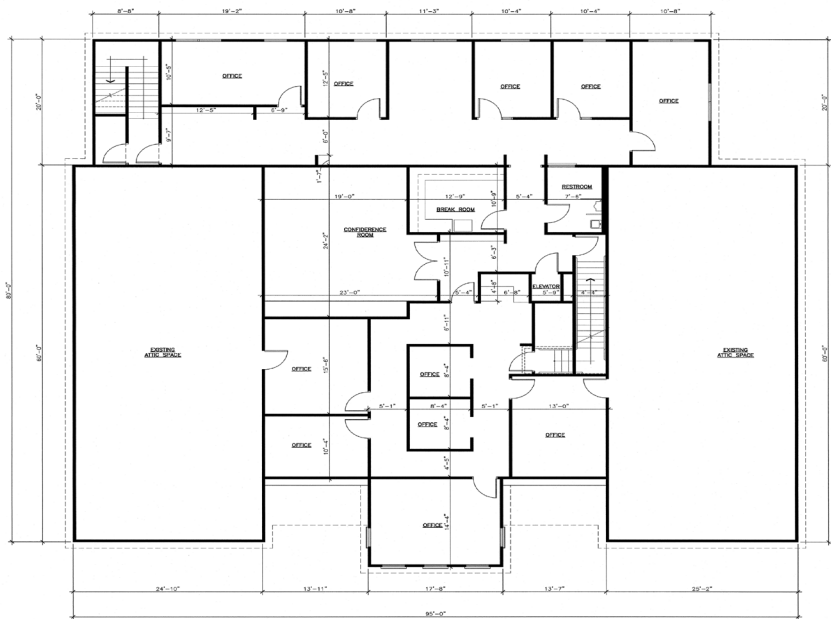
- 21 Offices
- Conference Room
- 2 File Rooms
- 2 Restrooms



① FIRST FLOOR PLAN
3/16" = 1'-0"

Second Floor, 4,140 SF

- 11 Offices
- Conference Room
- Breakroom
- Restroom



① SECOND FLOOR PLAN
3/16" = 1'-0"



Devereux
Real Estate Investments

PAT MORRISON
EXECUTIVE BROKER

5309 W. VILLAGE PKWY | SUITE 2
ROGERS, AR 72758
P. 479-464-4292
C. 479-936-4200
PatMorrison@DevereuxREI.com



PAT MORRISON
EXECUTIVE BROKER

5309 W. VILLAGE PKWY | SUITE 2
ROGERS, AR 72758
P. 479-464-4292
C. 479-936-4200
PatMorrison@DevereuxREI.com

